

Perforated Sheets



Banaraswala
Metal Crafts

An ISO 9001:2008 Certified Company

Perforated Sheets

Perforated products are used across a wide section of industry for varied purposes like sound insulation, filtration & decorative uses

We specialize in custom manufacturing of perforated sheets in various metals

Mild Steel - Most Commonly used due to its cost effectiveness

Stainless Steel - It ensures long working life without corrosion. We undertake perforation in AISI grades 304, 310, 321, 410, 430 and Duplex (2205)

Galvanized Steel - It is mild steel coated with zinc

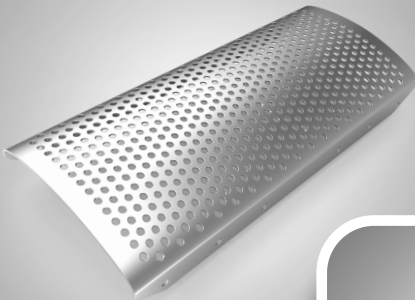
We also perforate in Aluminium, Copper, Brass materials

We can perforate these material from 0.35mm thickness to 12mm sheet thickness.
We have a large set of tools to perforate different holes sizes with different pattern.
The different shapes we can perforate is

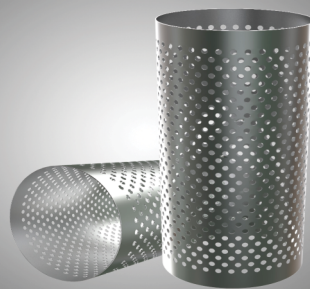
We can perforate is

Round
Square
Rectangle(Slotted)
Hexagonal
Diamond
Triangle

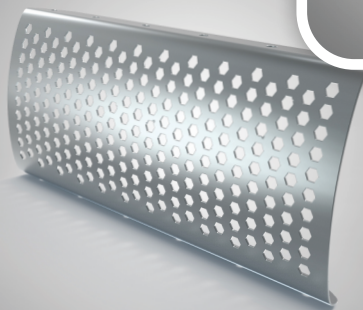
Round Hole



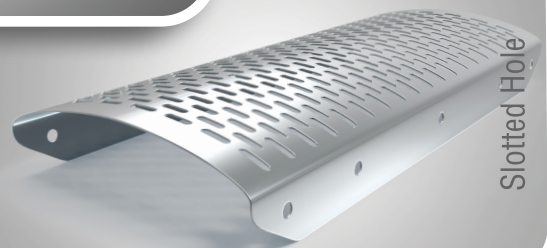
Square Hole



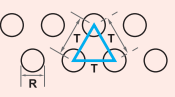
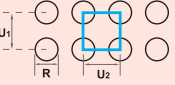
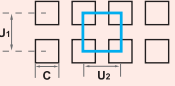
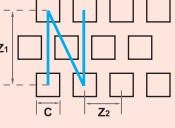
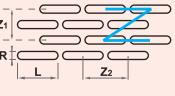
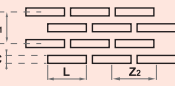
Hexa Hole



Slotted Hole



Perforation Formulas

Arrangement of holes	es r p on	Open area %	Number of holes per sq. m
	R - T	$\frac{R^2 \times 90.69}{T^2}$	$\frac{1,154,700}{T^2}$
	R - U	$\frac{R^2 \times 78.5}{U_1 \times U_2}$	$\frac{1,000,000}{U_1 \times U_2}$
	C - U	$\frac{C^2 \times 100}{U_1 \times U_2}$	$\frac{1,000,000}{U_1 \times U_2}$
	C - Z ₁ , Z ₂	$\frac{C \times 100}{0.5 \times (Z_1 \times Z_2)}$	$\frac{1,000,000}{0.5 \times (Z_1 \times Z_2)}$
	LR - Z ₁ , Z ₂	$\frac{(L \times R - 0.215R^2) \times 100}{0.5 \times (Z_1 \times Z_2)}$	$\frac{1,000,000}{0.5 \times (Z_1 \times Z_2)}$
	LC - Z ₁ , Z ₂	$\frac{L \times C \times 100}{0.5 \times (Z_1 \times Z_2)}$	$\frac{1,000,000}{0.5 \times (Z_1 \times Z_2)}$

Readily Stocked Items

Hole (in MM)	Pitch (in MM)	Open Area %
0.5	1.1	18.74
0.8	1.4	29.61
0.9	1.4	37.48
1	1.7	31.38
1.2	2	32.65
1.5	2.5	32.65
1.8	3.5	23.99
2	4	22.67
2.2	4	27.43
2.5	4.5	27.99
3	5	32.65
3.2	6.5	21.98
4	6.5	34.34
4.5	6.5	43.47
5	8	35.43
6	9	40.31

Hole (in MM)	Pitch (in MM)	Open Area %
7	13	26.29
8	11.5	43.89
10	12	62.98
10	15	40.31
10	20	22.67
12	18	40.31
15	25	32.65
16	25	37.15
18	25	47.01
20	30	40.31
25	35	46.27
28	39	46.75
30	50	32.65
50	65	53.66
65	80	59.87
80	100	58.04

other sizes can be manufactured as per customer requirement

Hole shape and arrangement

Diamond uses the following norms when describing hole shape and arrangement.

Shape of holes:



R = Round holes



C = Square holes



H = Hexagonal holes



LR = Slot holes



LC = Rectangular holes



CD = Square, Diagonal

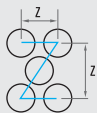
Arrangement of holes:



T = Triangular pitch



U = Rectangular pitch

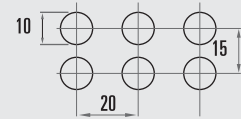


U = Staggered pitch

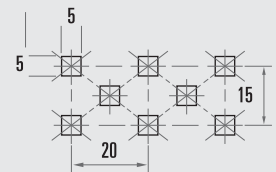


M = Diagonal pitch

Examples:



R 10 U 15x20

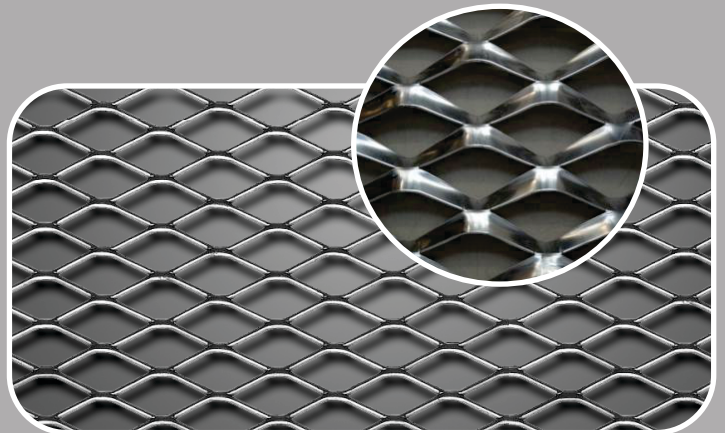


C 5 Z 15x20

Expanded Metal

Expanded metal is made by sheering and stretching a sheet forming a diamond pattern. It is commonly used for grating. Expanded metal is commonly manufactured in Aluminum, Mild Steel and Galvanized iron sheets. We can manufacture expanded metal from 0.5mm thickness to 8mm thickness up to 6'

The standard opening range from LWD - 12.5mm to 200mm
 SWD - 5mm to 80mm



For More Details Contact:



Branches:

Chennai:

Ph: 044-25246766, Fax: 044-25246767

Secunderabad:

Ph: 040-32442269, Fax: 040-27890371

Navi Mumbai:

Ph: 022-32152346, Fax: 022-27481440

Ahmedabad:

Ph: 079-22164072, Fax: 079-2217481

For More Details Contact:

Banaraswala Metal Crafts (P) Ltd

621, Trichy Road, ELGI Industrial Complex
 Singanallur, Coimbatore - 641005, India

Ph: 422-2580350, 422-2596196
 Email: ho@banaraswala.com

www.banaraswala.com

