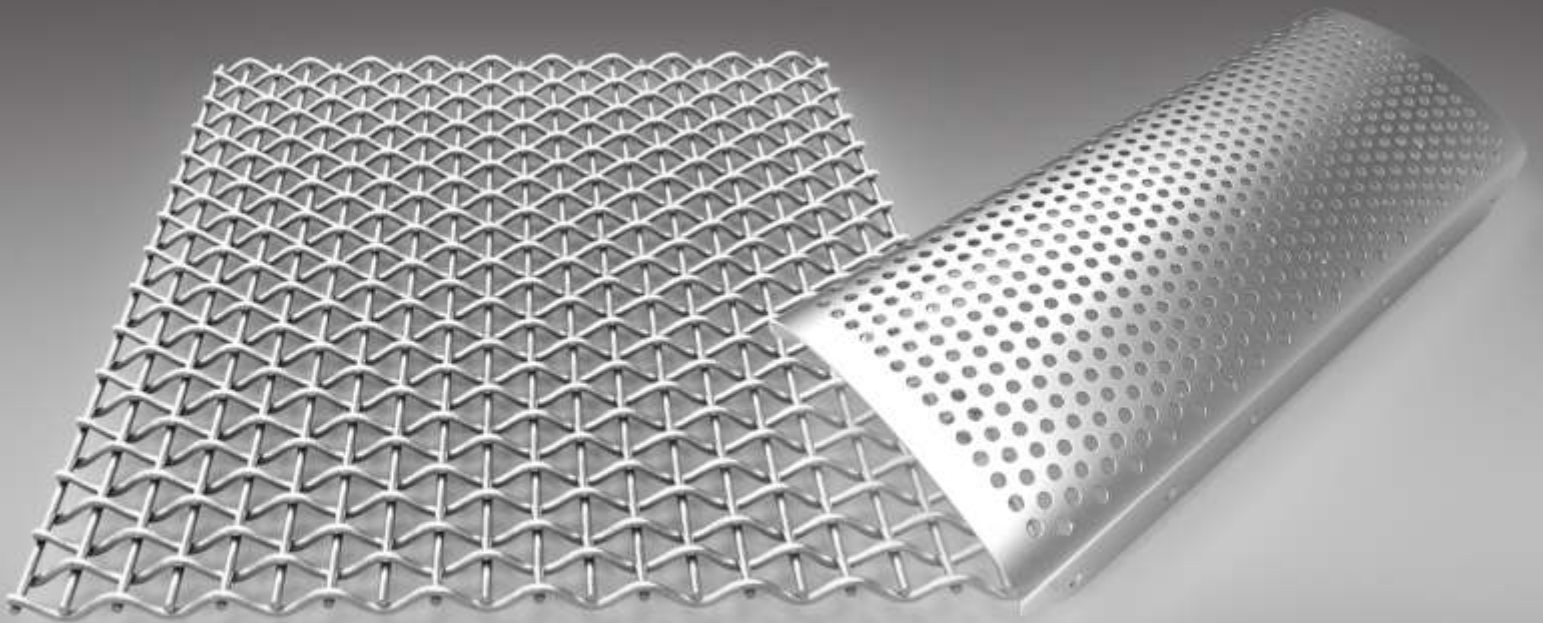




Banaraswala

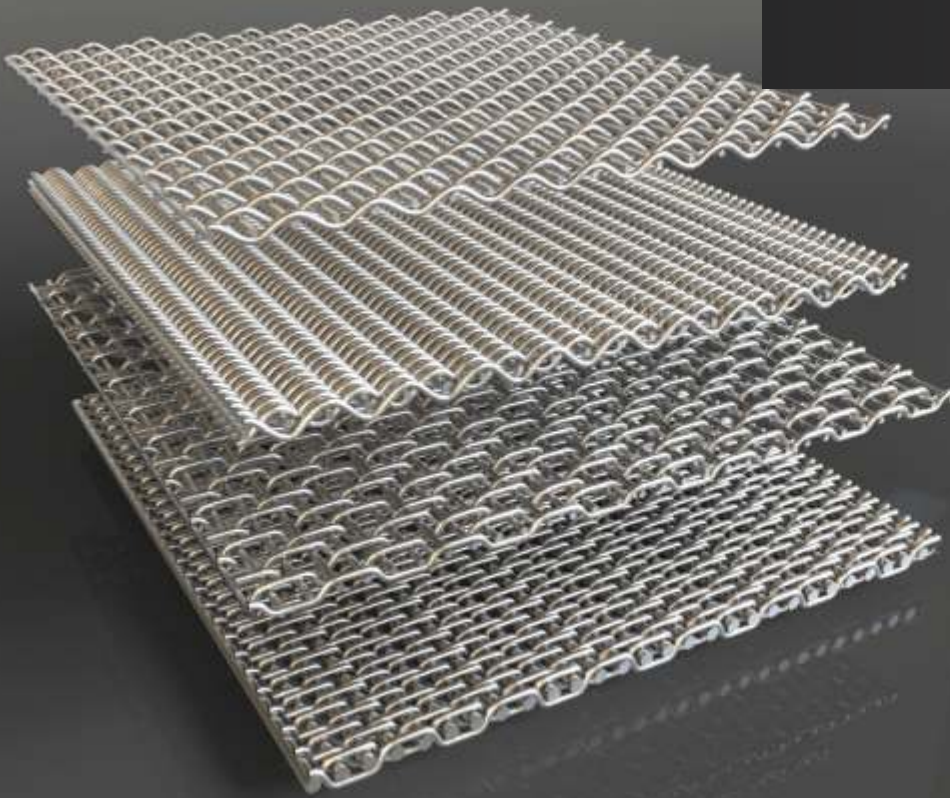
Metal Crafts



Wire Mesh & Perforated Sheet

An ISO 9001:2008 Certified Company

Wire Mesh



Wire mesh is primarily used as industrial filters in the application of filters, strainers, baskets, sieves and separator. Wire Mesh are readily available in the form of rolls, cut piece, round discs and can also be customized as per requirement. Plain weave, Twilled weave, Plain Dutch Weave & Twilled Dutch Weave are the different types of weave.

Range: 1 mesh to 2300 mesh

Thickness: 0.025mm to 2.5mm wire dia

Material: Stainless Steel (304, 316, etc.)
GI, Brass, Copper,
Phosphor bronze, Aluminum,
Nylon, Synthetic,
Fibre & Epoxy coated

Perforated Sheet

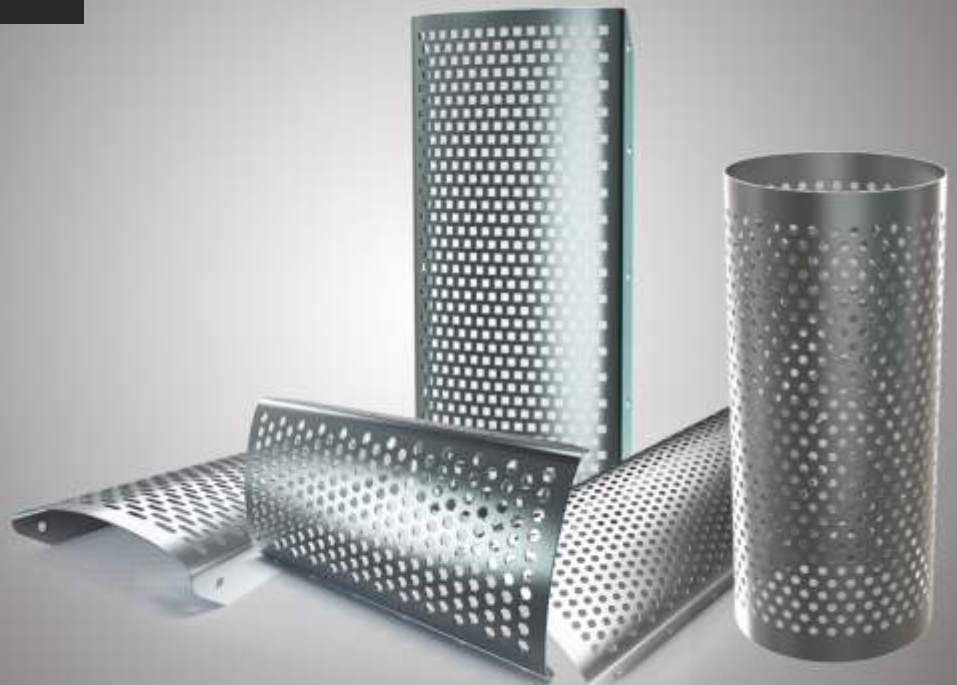
Perforated products are used across a wide section of industry for varied purposes like sound insulation, filtration & decorative uses

Range

Hole Dia: 0.5mm to 100mm

Thickness: 0.35mm to 12mm thickness

Material : Mild Steel
Stainless Steel
AISI grades 304,310,321,
410,430 and Duplex
(2205) Galvanized Steel
Brass, Aluminium

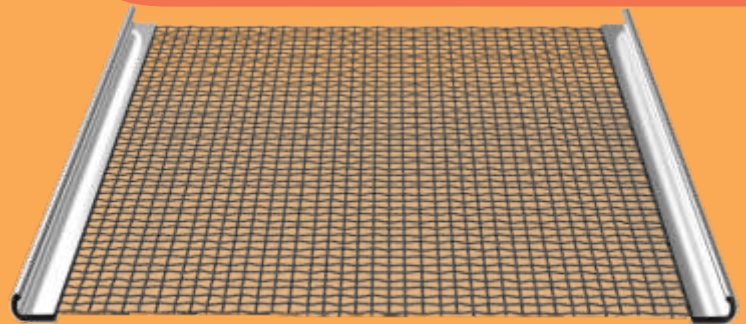




Vibrating Screen

We offer wire screens used in vibrating screen machine. We provide screens with and without clamp of various sizes as desired by the user.

Range	Opening	-	2mm opening to 125mm opening
	Thickness	-	1.2 mm thickness to 12 mm wire dia
	Material	-	Spring Steel



Crimped Mesh

Crimped wire mesh is where pre crimping of wire is done before doing the Weaving process. Crimping is done in three pattern, plain crimp, intercrimp and lock crimp depending on the wire thickness

Range	Opening	-	2mm opening to 125mm opening
	Thickness	-	1mm thickness to 10mm
	Material	-	SS (304, 316, etc.) Galvanized Iron (GI)



Expanded Metal

Expanded metal is made by sheering and stretching a sheet forming a diamond pattern. It is commonly used for grating.

Range	LWD	-	12.5mm to 200mm
	SWD	-	5mm to 80mm
	Thickness	-	0.5mm to 8mm
	Material	-	Aluminium, Mild Steel (MS), Galvanized Iron (GI) and Stainless steel



Welded Mesh

Welded wire mesh is a variation of wire mesh wherein the intersections are resistance welded according to the material. They are available in rolls or flat panels.

They have varied usage across industries ranging from Infrastructure to fabrication

Range

Opening : 15mm to 150mm
Wire Dia : 1mm to 6mm
Material : Mild Steel (MS), Galvanized Iron (GI) and Stainless steel

Chain Link Fencing

Chain Link fencing, also known as diamond mesh is commonly used to fencing large area of land. They are commonly manufactured using galvanized iron wire for rigidity and anti corrosive ability. For aesthetics, PVC coated galvanized chain link fencing is preferred.

Range

The commonly used sizes in chain link fencing is
Opening - 2", 2.25", 2.5", 3", 4", 5"
Thickness - 14swg (2mm), 12swg (2.6mm), 10swg (3mm), 8swg (4mm)
Height - 3', 4', 6' (can be manufactured up to 10' height)
Material - SS, Galvanized Iron (GI), PVC



Filter Disc's

Wire mesh is cut in round sizes to meet specific requirement of industries and used as filter disc's. Two or more specification of wire mesh are clubbed together and used as sandwich mesh.

Range

Commonly used diameters in Disc filters are 80mm round, 150mm round, 220mm round. The sieves vary from 10 microns to 1000 microns as per application



For More Details Contact:



Branches:

Coimbatore

Ph: 422-2580350, 2596196

Chennai:

Ph: 044-25246766, 25246767

Secunderabad:

Ph: 040-32442269, 27890371

Navi Mumbai:

Ph: 022-32152346, 2748144

Ahamedabad:

Ph: 079-22164072, 2217481

For More Details Contact:

Banaraswala Metal Crafts (P) Ltd

No. 22, C-Road, Babungachi, P.O.: Salkia, P.S. Liluah, Howrah - 711106, India

Ph: 033 - 26511466, 81004 07388

Email: kolkata@banaraswala.com

www.banaraswala.com

